

# SAFETY JOGGER

## INDUSTRIAL

Medium

## MODULO S3S MID

MODULOS3M

Super comfortable vegan safety mid cut sneaker

**Comfort that lasts.** MODULO is the ultimate choice for both men and women who demand excellence from their safety footwear. This safety shoe offers an array of key features, such as slip resistance, a breathable design, comfortable footbed, ESD, lightweight midsole and toe cap & much more. Made from vegan materials.

Upper	Microfiber
Lining	Mesh
Footbed	SJ foam footbed
Midsole	Anti-puncture Textile
Outsole	BASF PU/BASF PU
Toecap	Nano Carbon
Category	S3S / SR, SC, ESD, CI, FO
Size range	EU 35-50 / UK 3.0-14.0 / US 3.0-15.0 JPN 21.5-33.0 / KOR 230-330
Sample weight	0.580 kg
Norms	ASTM F2413:2018 EN ISO 20345:2022+A1:2024 IS 15298 (Part 2): 2016



### Vegan

Uses or contains no animal products.



### ScuCap(SC)

Separately tested material to cover the toe cap area to reduce abrasion of the upper material (e.g. during kneeling operations) and extend usability of the safety shoe.



### Slip resistance (SR)

Replaces the previously used term of SRA+SRB=SRC. SR means the slip test has been executed on tiles contaminated with soap and with oil.



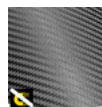
### Heel energy absorption

Heel energy absorption reduces the impact of jumps or running on the body of the wearer.



### Puncture resistant lightweight

Metal free, super flexible and ultralight puncture resistant midsole. Covers 100% of the bottom area of the last, no thermal conductivity.



### Metal free

Metal free safety shoes are in general lighter than regular safety shoes. They are also very beneficial for professionals who have to pass through metal detectors several times a day.



BLK

**SAFETY JOGGER**  
WORKS

Solutions for every workplace

INDUSTRIAL PROFESSIONAL TACTICAL TIGER GRIP

ENGINEERED  
IN EUROPE

[www.safetyjogger.com](http://www.safetyjogger.com)

**Industries:**  
Assembly,Automotive, Catering, Cleaning, Industry, Logistics

**Environments:**  
Dryenvironment,Extreme slippery surfaces, Wet environment

**Maintenance instructions:**  
Toextendthe lifeof yourshoes,we recommend to clean them regularly and to protect them with adequate products. Do not dry your shoes on a radiator, nor nearby a heat source.

	Description	Measure unit	Result	EN ISO 20345
Upper	Microfiber			
	Upper: permeability to water vapor	mg/cm²/h	8.20	≥ 0.8
	Upper: water vapor coefficient	mg/cm²	68	≥ 15
Lining	Mesh			
	Lining: permeability to water vapor	mg/cm²/h	60.62	≥ 2
	Lining: water vapor coefficient	mg/cm²	485	≥ 20
Footbed	SJ foam footbed			
	Footbed: abrasion resistance (dry/wet) (cycles)	cycles	Dry 25600 cycles/Wet 12800 cycles	25600/12800
Outsole	BASF PU/BASF PU			
	Outsole abrasion resistance (volume loss)	mm³	127mm³ (Density:1.09g/cm³)	≤ 150
	Basic Slip resistance - Ceramic + NaLS - Forward heel slip	friction	0.33	≥ 0.31
	Basic Slip resistance - Ceramic + NaLS - Backward forepart slip	friction	0.42	≥ 0.36
	SR Slip resistance - Ceramic + glycerin - Forward heel slip	friction	0.22	≥ 0.19
	SR Slip resistance - Ceramic + glycerin - Backward forepart slip	friction	0.25	≥ 0.22
	Antistatic value	MegaOhm	31.5	0.1 - 1000
	ESD value	MegaOhm	21	0.1 - 100
	Heel energy absorption	J	31	≥ 20
Toecap	Nano Carbon			
	Impact resistance toecap (clearance after impact 100J)	mm	N/A	N/A
	Compression resistance toecap (clearance after compression 10kN)	mm	N/A	N/A
	Impact resistance toecap (clearance after impact 200J)	mm	15.5	≥ 14
	Compression resistance toecap (clearance after compression 15kN)	mm	21.0	≥ 14

Sample size: 42

Our shoes are constantly evolving, the technical data above may change. All product names and brand Safety Jogger, are registered and may not be used or reproduced in any format, without written consent from us.



Solutions for every workplace

INDUSTRIAL PROFESSIONAL TACTICAL TIGER GRIP

ENGINEERED  
IN EUROPE

www.safetyjogger.com